



SENSORLESS 24 to 50 Vdc 25 AMP 50 AMP 10"30.000 RPM

Brushless electronic board, sensorless motor
2-Dials

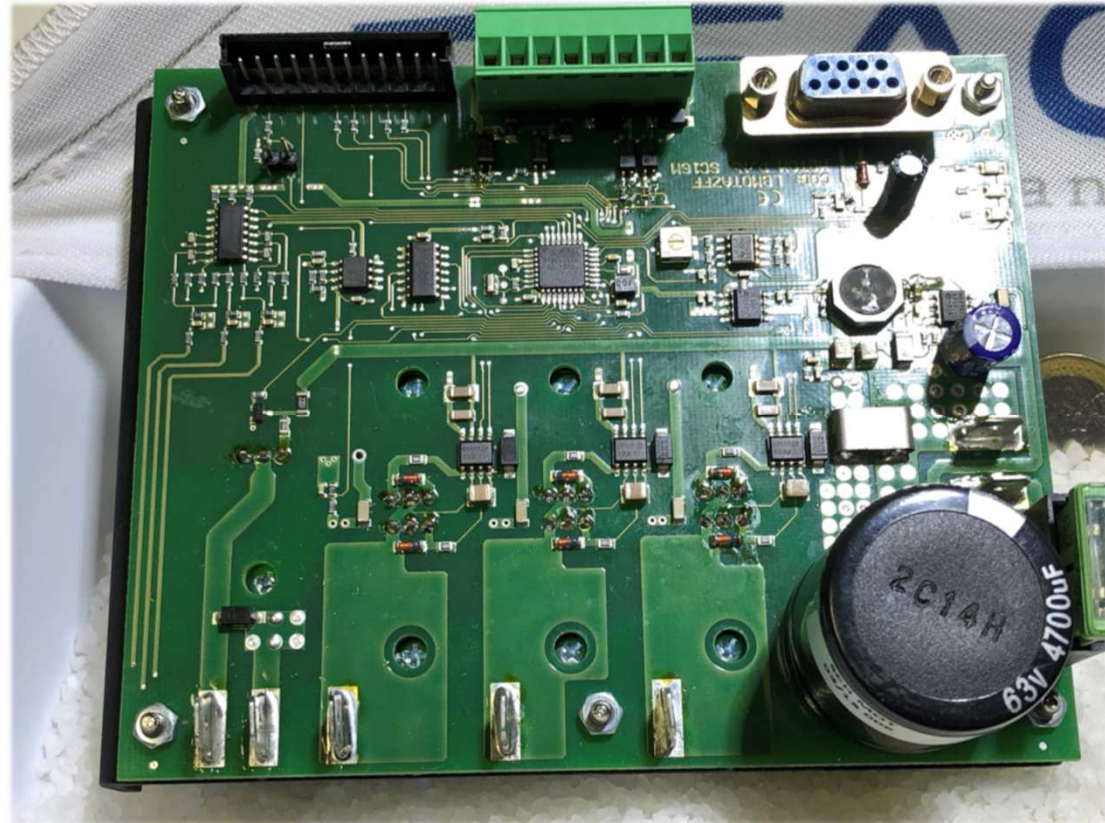
It is possible to modify the parameters with Hyper Terminal from serial 232
Two Currents, Speed, Soft Start, Delay Current

Alarm:
On Led for minimum voltage, maximum voltage, overtemperature, lack of voltage, maximum current (read by serial)

Brake resistance

Opto:
Two isolated opto inputs 24 Vdc
Two isolated opto outputs 24 Vdc

Input:
Speed reference speed 0-5 or 0-10 Vdc
Direction, Start-Stop
Exit:
Alarm





FEATURES	
Power	Power input from 24 to 50 Vdc +/- 10%.
Drive type	Driving a BLDC brushless motor in sensorless
Fixing holes	Two holes on the aluminum L-shaped heatsink
Dimensions	L x B x H:130 x 105 x 40 mm
Drive piloting type	2-quadrant piloting, trapezoidal, six steps
Number of motor poles	2
No-load absorbed current	35mA
Efficiency	90%
Operating temperature	0 ... +50 °C
PWM switching frequency	8KHz +/- 5%
Fuse	A 30A fuse type those for automotive The fuse does not protect the board from reverse polarity.
Current	MAX 25 Ampere adjustable via serial
Peak current	MAX 50 Ampere for 9.9 seconds adjustable via serial
Maximum speed	Maximum speed 30000 RPM x 2-pole motor and depending on the power supply and programming to be carried out via serial. Maximum speed 15000 RPM x 4-pole motor and depending on the power supply and programming to be carried out via serial.
Minimum speed	Minimum speed 3000 RPM x 2-pole motor and depending on the power supply and programming to be carried out via serial. Minimum speed 1500 RPM x 4-pole motor and depending on the power supply and programming to be carried out via serial.
Soft start	0...9,9 seconds adjustable via serial
Full scale	Change the full scale of the serially adjustable rpm number