

ESACROM R&D DEPT.

PRESENTS

# VETERINARIAN REGENERATIVE CARE SYSTEM KIT

by Dr. Francesco Paesano

*Beyond hygiene, into regeneration*



02/03/2026

## ONE KIT – MULTIPLE APPLICATIONS



A single set of inserts for:

- Advanced periodontal prophylaxis
- Regenerative periodontal surgery
- Guided Tissue Regeneration with bone grafts
- Autologous bone harvesting (with ES001T already in the Oral surgery kit)
- Treatment of chronic infected wounds

A minimally invasive, biologically driven and scientifically validated approach.

### Codes

- VRCS kit of 6 tips with Surgyport
- ES016T flat shaped tip, unsharpened
- ES018T point shaped tip, unsharpened
- ES012CT pointed shaped tip, T-COR treatment
- ES052CT conical shaped tip, T-COR treatment
- ES020XT cylindrical shaped tip, micro sharpened
- ES0007ST cysel, saw shaped sharpened
- SURGYPORT tips holder for 6 insertscysel, saw shaped sharpened

# PIEZOELECTRIC KIT FOR PERIODONTAL TREATMENT AND WOUND DEBRIDEMENT

Precision, selectivity and minimal tissue trauma for modern veterinary medicine

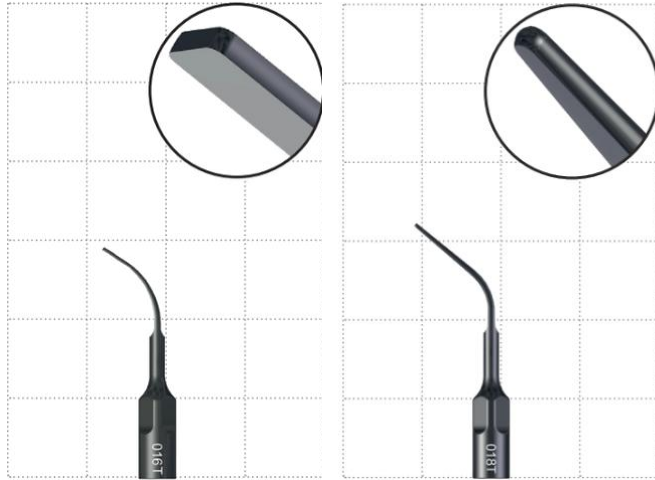
The Piezoelectric Kit for Periodontal Treatment and Wound Debridement has been designed to provide veterinary clinicians with a complete, versatile and biologically advanced solution for the management of periodontal disease, regenerative periodontal surgery, and chronic infected wounds.

Based on ultrasonic piezoelectric technology, this kit allows selective action on mineralized and necrotic tissues, preserving healthy soft tissues and promoting faster, more predictable and biologically respectful healing.

Perfect for all types of chronic infect wounds.

- Major burns
- Chronic wounds
- Acoustic wave jet streaming break down and remove only infected tissue

\* Ideal for abscesses in rabbit and exotic animals



## SUPRAGINGIVAL AND SUBGINGIVAL SCALING

Controlled removal of plaque, calculus and biofilm

Dedicated tips:

- ES016T – Supragingival scaling
- ES018T – Subgingival scaling

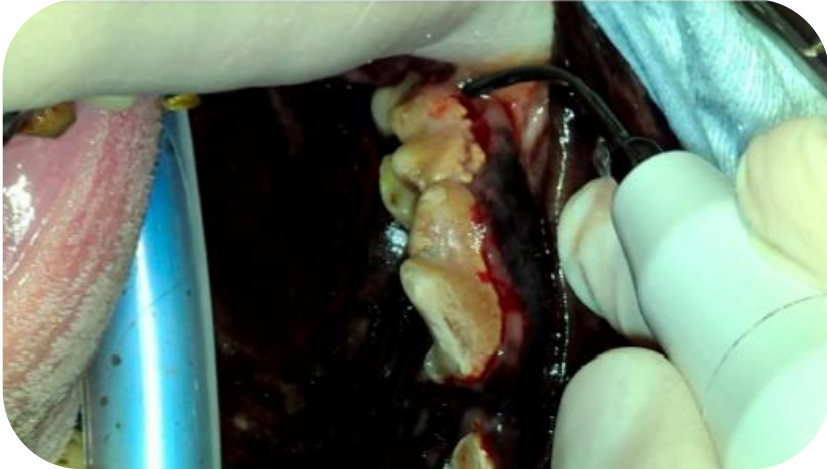
The ES016T and ES018T tips allow effective removal of plaque, calculus and bacterial biofilm both above and below the gingival margin, significantly reducing mechanical trauma compared to conventional instruments.

Clinical advantages:

- \* Selective action on mineralized tissues
- \* Reduced intraoperative bleeding
- \* Improved surgical field visibility

	Code	Code
	ES016T	ES018T
<b>U</b>	<b>08</b>	<b>08</b>
<b>V</b>	<b>00</b>	<b>00</b>
<b>P</b>	<b>100</b>	<b>100</b>
<b>MAX POWER</b>	<b>30</b>	<b>30</b>

## Periodontology



## Scaling

**Supragingival: ES016T**

Subgingival: ES018T

A very robust insert with a wide tip, allowing effective removal of even the most stubborn and tenacious calculus and plaque. Particularly useful in large-breed patients

## Periodontology

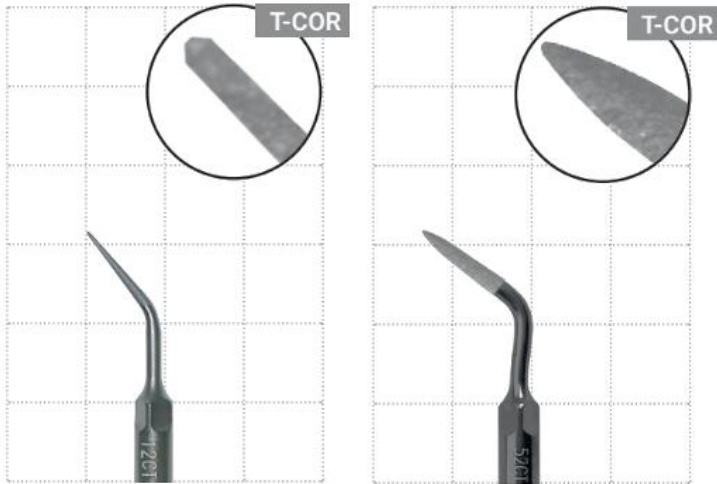


## Scaling

Supragingival: ES016T

**Subgingival: ES018T**

With its thin and precise tip, this insert is ideal for subgingival scaling, but also highly effective for supragingival scaling in small- and medium-sized dogs and cats.



## ROOT PLANING AND PERIODONTAL SURGERY

The first step for successful Guided Tissue Regeneration (GTR)

Dedicated tips:

- ES012CT
- ES052CT

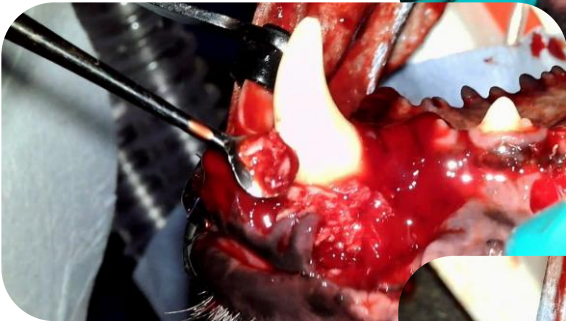
Root planing is the first and most critical step in both non-surgical and surgical periodontal therapy and represents the essential biological foundation for the success of any Guided Tissue Regeneration (GTR) procedure.

Several studies have shown that piezoelectric-assisted root planing is superior to traditional manual instruments, such as curettes, which tend to leave grooves and irregularities on the root cementum surface, promoting plaque adhesion and bacterial recolonization.

The piezoelectric tips 12CT and 52CT allow precise and controlled root surface smoothing, effectively removing infected cementum, biofilm and bacterial residues without causing iatrogenic damage to the tooth.

	Code	Code
	ES012CT	ES0052CT
U	15	15
V	00	00
P	50	50
MAX POWER	30	30

## Periodontology



### *Clinical and biological benefits*

- Clean, biologically compatible root surfaces
- Reduction of periodontal inflammation
- Improved soft tissue attachment
- Optimal conditions for guided tissue regeneration

### *Integration with Bone Grafting*

Piezoelectric periodontal surgery integrates perfectly with the use of bone grafts, including autologous bone grafts, which can be harvested directly from the patient using piezoelectric technology with the ES01T insert.

This combined approach allows:

- Atraumatic harvesting of vital bone
- Improved graft integration
- Optimization of regenerative outcomes



## ULTRASONIC WOUND DEBRIDEMENT

Selective treatment of any type of chronic infected wound

Dedicated tips:

- ES020XT
- ES007ST

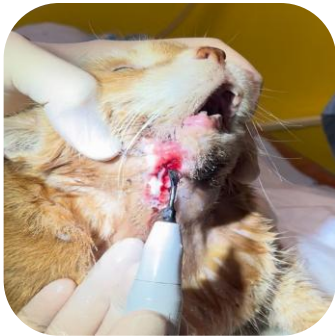
Ultrasonic wound debridement is an advanced and highly effective technique for the treatment of any type of chronic infected wound, not limited to the oral cavity and applicable to different anatomical sites.

By exploiting the combined biological effects of ultrasound and cavitation, this method selectively removes necrotic tissue, fibrin and bacterial load while preserving healthy tissue and vital granulation.

	Code	Code
	ES020XT	ES007ST
<b>U</b>	<b>25</b>	<b>25</b>
<b>V</b>	<b>40</b>	<b>40</b>
<b>P</b>	<b>100</b>	<b>100</b>
<b>MAX POWER</b>	<b>30</b>	<b>30</b>



PIC1 \*



PIC2 \*



PIC3\*\*



**Clinical indications:**

- Chronic infected wounds (pic 3\*\*)
- Contaminated skin and subcutaneous lesions
- Osteomyelitis (pic 1\*)
- Complicated surgical wounds (pic 2\*)
- Postoperative treatments, often without general anesthesia

**Key advantages:**

- Bactericidal and antibiofilm effect
- Reduction of exudate
- Stimulation of angiogenesis
- Faster healing times
- Pain reduction and improved patient tolerance

\* courtesy of Dr. Francesco Paesano

\*\* courtesy of Dr. Matteo Poli

## DISCOVER OUR ULTRASONIC WORLD!

Follow us on     @esacromsrl

On our social profiles you will find continuous updates  
on #Esacrom training,  
Take part in our exclusive courses and events to find out more!

For further information please contact:

**Esacrom srl**

Via Zambrini 6/A-40026 IMOLA(BO)

TEL. +390542643527 FAX +390542482007 [esacrom@esacrom.com](mailto:esacrom@esacrom.com)

CE 0051

